



WELLBEING STRATEGY

Living a Larger Life - Calderdale 2019 - 2024



#VISIONCDALE2024



VISION 2024

OUR VISION FOR CALDERDALE

The Wellbeing Strategy is set within the context of Vision 2024. Our vision for Calderdale in 2024 is for a place where you can realise your potential whoever you are, whether your voice has been heard or unheard in the past.

- We aspire to be a place where talent and enterprise can thrive.
- A place defined by our innate kindness and resilience, by how our people care for each other, are able to recover from setbacks and are full of hope.
- Calderdale will stand out, be known, and be distinctive. A great place to visit, but most importantly, a place to live a larger life.

The Wellbeing Strategy and the Inclusive Economy Strategy describe a clear and challenging strategic aspiration for Calderdale.

Our ambition is to ensure that people of Calderdale enjoy more years of healthy life; that the gaps in healthy life expectancy between different communities are reduced; and that everyone whatever their health or disability is supported and enabled to lead the fullest life possible.

Good physical and mental health has a significant influence on overall wellbeing. It allows people to participate in family life, the community and the workplace. It has value in its own right and it also creates value. Put simply, health should be viewed as an asset that is worth investing in for our society to prosper. Indeed people generally place more value on being healthy than on factors like income, careers or education.

The ways to improve health are well known: investment in early years development; lifelong learning; provision of good-quality, affordable housing; availability of high-quality jobs; public transport systems; and a food system that supports healthy options.

Calderdale is a great place to live. Most of us are fit and healthy, and generally the quality of life here is good. However, like everywhere, the picture in Calderdale is not perfect. The health and wellbeing of people in some of our communities is not improving at the same rate as others. Every year, far too many people suffer avoidable ill health or die earlier than they should – this is known as health inequality. These inequalities need to be tackled to make life better for everyone living in Calderdale.

We also have a growing number of people living into old age. Whilst it is good news that people are living longer, it is important that the quality of our life remains high too.

The things that affect our health and wellbeing vary over the course of our lifetime. Therefore, the strategy has been developed using four significant stages of the life course.

- **Starting well (0-5)**
- **Developing Well (6-25)**
- **Living & working well**
- **Ageing well**

This strategy sets our high level priorities, based on these four life stages, with an overall priority of impacting on the wider determinants of health.

The success of the strategy will be measured against the outcomes we have included, which will also be used to shape commissioning across



A handwritten signature in black ink that reads "Tim Swift". The signature is written in a cursive style and is underlined with two horizontal lines.

Tim Swift
Chair, Calderdale Health and Wellbeing Board

the health and care system and to develop more detailed action plans to improve the health and wellbeing of people who live and work in Calderdale. Average is not good enough for Calderdale people. We will aim to be in the top 25% nationally for all of the measures we have identified in this strategy. A small number of measures will be common to both the Wellbeing and Inclusive Economy Strategies and align with the outcomes set out in Vision 2024. These outcome measures and action plans will be developed with Calderdale citizens and stakeholders and will be reviewed regularly by the Health and Wellbeing Board.

This strategy does not list everything that all organisations will be undertaking to improve health and wellbeing; instead it focuses on setting out our vision and priorities for integrated working over the next five years to 2024. The strategy will further evolve. For example Calderdale has recently declared a climate emergency, the actions needed to support our environment will very clearly link to protecting and promoting our health.

A wide range of partners, including those from health, local government, voluntary and community sectors will contribute towards the delivery of this overarching strategy through their own strategic aims. Above all, we will work with local people to deliver this strategy

This strategy is fundamentally concerned with people being all they can be, people should be able to “lead a larger life”. This includes being creative, being able to express ourselves fully and engage in quality relationships.

Doing things differently - Our principles

We have identified four key principles that will inform the way we all work together, what we do and how we report our progress on improving health and wellbeing:

A new relationship with communities

We believe the relationship between organisations and communities needs to change. We will listen so people feel heard and we will demonstrate - with evidence - that people have been heard. We will involve our communities in the work we do, and co-design our plans for change with them. People are empowered to take greater control over their lives and outcomes - with improved health, so they are happier and better connected. As organisations we need to focus our limited staff time and money on the things that only we can offer, and support communities to use their valuable skills and time to do more for themselves and each other. We need to work together to create stronger communities that can cope with and recover from problems well. We need to develop 'kindness by design' to ensure our offers best meet the needs of our diverse populations. We will establish methods to ensure a transfer of resources to support community action.

A shift to prevention and health outcomes

Our systems need to shift towards prevention, which will require us to change the ways our organisations and our staff work. As organisations we need to make sure it is easier for people to have healthier options and we need to have a relentless focus on health outcomes and not just on service delivery. These outcomes will be agreed with the people we serve. Our focus will be on reducing the unjust health inequalities that prevail in Calderdale and we will seek to ensure our resources are used in the most effective and efficient way to reduce inequality. We will change the nature of the relationship between people and services, and the relationship between people and their own health, changing the way our staff see their roles, their day job and constant improvement in the work they do.

Support integrated care services

A stronger focus on joining up health and care services - moving more services from hospitals to community settings, only having to tell your story once, and making it easy to find out what support is there to help you and how to access it. Calderdale Cares articulates a vision of integrated commissioning and integrated delivery with organisations coalescing around a single set of outcomes.

Health in all policies

A commitment to ensure that all policies consider and promote the health and wellbeing of citizens, and address the climate change emergency. Resources and assets will be used to address the wider determinants of health and support wellbeing.

Improving health and wellbeing throughout people's lives

Our goal is to optimise the health and wellbeing of people in Calderdale throughout the course of their lives. For this reason, our strategy is divided into four sections, each relating to one of the major life stages:

Starting Well

The first section focuses on babies and very young children, and covers ages 0-5 years (including pregnancy).

Developing Well

Childhood and young adulthood (6-25)

Living & Working Well

Working age adults.

Ageing Well

With a focus on older people, covering people 65 and older.



Being Well

A healthy person is someone with; meaningful work or purpose in life, secure housing, stable relationships, high self-esteem, and healthy behaviours.

Health is not just in the gift of our health and social care services. A healthy society, in turn, is not one that waits for people to become ill, but one that sees how health is shaped by social, cultural, political, economic, commercial and environmental factors, and takes action on these for current and future generations.

The Strategy will monitor and accelerate actions to improve the conditions and environments in which people in Calderdale live.

Some key social determinants of health are: our education and employment opportunities; our housing; our income; our social networks; and where we live and the extent it facilitates physical activity, good food and social connection. These factors shape the conditions in which people are born, grow, live, work and age (our key life courses)

Addressing these determinants is crucial in reducing health inequality and improving health.

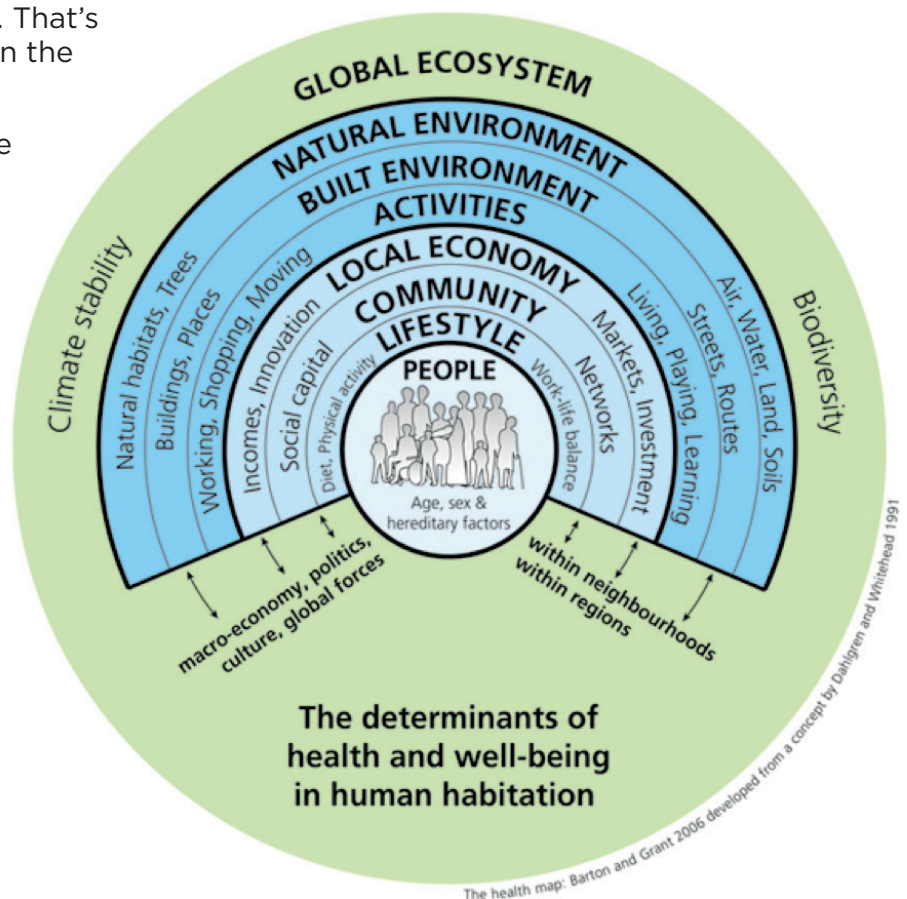
Calderdale has declared a climate emergency. The dramatic consequences of climate change are already being seen in our borough, with presumed once in a life time floods occurring at much more regular intervals. Our climate and environment have clear impacts on our health, whether it is the mental health impact of flooding or the impact on future generations

People's health is affected by where they live, how well-off they are, their gender, and whether they have a disability. In England, a girl born in the least deprived 10% of local areas can expect to live 70.4 years in good health, but she would live only 52.0 years in good health if born in the most deprived 10% of local areas - an 18.4-year gap. That's a difference of almost two-decades in the years of life spent in good health.

Underpinning the work across the life stages will be our commitment to ensure that the wider determinants of health are considered and addressed. Some of these determinants are addressed in other strategies e.g. employment and income measures are monitored through the inclusive Economy Strategy. The Wellbeing Strategy will focus on improving air quality, access to green space, poverty and housing.

There are two key outcomes that will describe the effectiveness of the strategy in making change:

- Life expectancy
- Healthy life expectancy



	indicator	Year	Rate	Calderdale	England
Poverty	Fuel poverty	2016	%	12.2	11.1
	Income deprivation IMD	2015	%	16.4	14.6
Environment	Proportion of residents using parks and green spaces	2018	%	81.7	N/A
Employment	Employment Rate	2018-19	%	75.7	75.6
Attainment	Inequality gap in Level 2 qualification achievement rate by age 19	2018-19	%	28.9	21.9
Attainment	Inequality gap in Level 3 qualification achievement rate by age 19	2018-19	%	27.1	25.1



	Year	Calderdale	England
Life expectancy at birth - males	2015-17	78.6	79.76
Life expectancy at birth - females	2015-17	82.1	83.1
Healthy life expectancy at birth - males	2015-17	61.6	63.4
Healthy life expectancy at birth - females	2015-17	64.4	63.8

There are significant inequalities in life expectancy in Calderdale, with the least deprived men expected to live seven and a half years longer than the most deprived. For women, the gap is even wider: the least deprived are expected to live just over 8 years longer than the most deprived.

Starting Well

What happens in pregnancy and early childhood impacts on physical and emotional health all the way throughout our lives.

Supporting good maternal health is important for safe delivery and good birth weight to give babies the best start. The prevention of adverse health factors in pregnancy is vital. Premature and small babies are more likely to have poorer outcomes.

The earliest experiences, starting in the womb, shape a baby's brain development. During the first 2 years of life the brain displays a remarkable capacity to absorb information and adapt to its surroundings. Positive early experience is therefore vital to ensure children are ready to learn, ready for school and have good life chances.

It is shaped by a number of factors such as:

- Sensitive attuned parenting.
- Effects of socio-economic status.
- The impact of high-quality early education and care.

Healthy mothers and healthy babies.

Support parents to take care of their own health and the health of their babies.

- More support to help women look after their mental health in the period immediately before and after the birth of their child.
- Improve outcomes for mothers and babies by reducing domestic abuse.
- Reduce the proportion of women who smoke during pregnancy.

Parenting for a bright future: All young children given a strong foundation.

- Work with parents of young children to help them develop well and give them a healthy start in life.
- Reduce the variation across Calderdale in young children's school readiness.
- Reduce the proportion of 4-5 year old children who are overweight or obese.

	indicator	Year	Rate	Calderdale	England
Infant Mortality	4.01 Infant Mortality	2015-17	Rate per 1000	5.1	3.9
Expected development aged 2-2 ½	Percentage of children at or above expected level of development in all five areas of development at 2-2½ years	2017-18	%	Not currently available	83.3
Children achieving a good level of development at the end of reception	School Readiness: the percentage of children achieving a good level of development at the end of reception	2017 -18	%	70.0	71.5
Healthy weight reception	Reception: Prevalence of healthy weight	2015-17	%	73.8	76.6



Developing Well

The well-being of our children and young people is vital if they are to become active participants in society, their communities and their families.

Evidence shows that well-being in children and young people has a wide range of social and personal benefits. These include; positive mental health, social connection, and a reduction in the likelihood of victimisation and involvement in risky behaviours. Increasing the level of well-being will ensure that young people growing up in Calderdale have a good childhood, and positive life chances.

Good mental health and wellbeing for children and young people.

We will:

- Address the wider causes of poor mental health in children and young people, including domestic abuse, and support those who are experiencing mental health problems.
- Address commonly experienced issues, such as bullying, which have a negative impact on children and young people's mental wellbeing.

Parenting for a bright future: Children and young people equipped to become healthy and successful adults.

We will:

- Support parents to help children and young people develop well and give them a healthy start in life.
- Improve life chances for our most disadvantaged children and young people, especially those looked after by the Council.

Help children and young people to adopt healthy lifestyles (including developing an understanding of healthy and safe relationships, and improving levels of physical activity), which will reduce their risks of experiencing health problems in later life.

- Reduce the proportion of 10-11 year olds who are overweight or obese.

	Indicator	Year	% or Rate	Calderdale	England
Healthy weight year 6	Year 6: Prevalence of healthy weight	2017-18	%	63.1	64.3
Emotional wellbeing	Year 7 and 10 pupils with high life satisfaction	2018	%	65	N/A
	Year 7 and 10 pupils with low self esteem	2018	%	19	N/A



Living and Working Well

Good health and well-being for people of working age, and enabling people to work longer in good health are important.

Exercise and an active and healthy lifestyle can work wonders for both physical and emotional wellbeing, whatever your age, health status, ability or gender. An individual's health is shaped by their workplace cultures and values, and the increase in mental health conditions is taking place in the context of increasing stress within the workplace and life in general. The negative effects of unemployment on health and mortality are well documented. The effects of a positive working-life, and supporting people to return to work are important, and link closely to the aspiration in our Inclusive Economy Strategy.

Good mental health and wellbeing for working age adults.

We will:

- Address the wider causes of poor mental health and support people who are experiencing mental health problems to recover or manage their condition.
- Tackle homelessness and housing issues and their underlying causes.

Healthy lifestyles for working age adults.

We will:

- Reduce avoidable disability and premature deaths by designing our environment to help people adopt more healthy lifestyles.
- Increase the proportion of working age adults who achieve recommended levels of physical activity and reduce levels of overweight and obesity.
- Reduce the harm caused to health by smoking, alcohol and drug use among working age adults.
- Assist people with learning disabilities to live a fulfilling life as citizens in their own local community.

	indicator	Year	% or Rate	Calderdale	England
Levels of physical activity	Percentage of physically active adults	2017-18	%	68.4	66.3
Smoking prevalence	Smoking prevalence in adults (18+) – current smokers	2018	%	15.5	14.4
Alcohol-specific mortality	Alcohol-specific mortality (persons)	2015-17	Rate per 100,000	13.8	10.6
Wellbeing	Overall, how satisfied are you with your life nowadays?	2017-18	Mean score on a scale of 1 to 10 with 10 being “completely satisfied”	7.59	7.69



Ageing Well

Health as we age is fundamental to our quality of life, allowing us to remain independent, to work or be involved in our local community and maintain social connections.

While people are living longer, the number of years lived in poor health and with disability are increasing. Aging does not necessarily decrease a person's ability to contribute to society: older people can and do make valuable and important contributions to society, and enjoy a high quality of life. Retirement is an increasingly active phase of life where people have opportunities to continue contributing to society by working longer or volunteering in their communities, enabling them to take personal responsibility for their own wellbeing by working, and looking after their health.

Older people remaining physically active and independent

We will:

- Enable people over 65 to remain physically active and we will reduce levels of frailty.
- Reduce hip fractures and injuries due to falls by people over 65.
- Support older people to regain their independence following a stay in hospital.

Good support in older age and end of life

We will:

- Enable people to live in their own homes for as long as possible and reduce social isolation in people aged over 65, ensuring good support and access to services for the rest of their lives.
- Work together to develop different kinds of accommodation for older people who need support to be as independent as possible.
- Improve the quality of our care homes and ensure people who live in care homes can access all the health services they need.
- Reduce preventable winter deaths of older people.
- Improve the support, care and quality of life of people with dementia and their family carers.
- Increase the number of people who die in their preferred place of death.

	indicator	Year	% or Rate	Calderdale	England
Life expectancy at 65	Male	2015-17	Years	17.8	18.8
	Female	2015-17	Years	20.6	21.1
Social isolation indicator	Social Isolation: percentage of adult social care users who have as much social contact as they would like	2017-18	%	53.7	46.0
Hip fractures	Hip fractures in people aged 65 and over	2017-18	Per 100,000	535	578
Excess winter mortality	Excess winter mortality deaths index (3 years, aged 85+)	Aug 2014 - July 17	%	29.3	29.3



Our distinctive Communities

Calderdale is made up of distinctive and different towns and communities. We will work with the people of our distinctive communities to keep them well and to develop and improve services with them in five localities through the Calderdale Cares programme.

We will take an asset-based approach, starting from people's strengths, not their deficits. And we will develop the assets in communities, rather than assuming formal health and care services as the first option.

Our distinctive localities are where we will plan the services for people when they need support. Council staff, NHS staff and third sector organisations will work together with local people to design services that will mean:

- Easier and faster access to a wider range of joined-up care options where people only have to tell their story once.

- Better outcomes based on what is important to people.
- Fewer trips to hospital as more services will be available in the community.
- More advice and guidance to help people make the right choices and manage their own health.
- Better access to local voluntary, cultural and community groups.
- More involvement in the design of care services.

We will identify the resources our organisations use in each locality, so that those resources can be moved around to get the best outcomes. And we will tackle health inequalities by moving resources to those areas that need them most.

A Kinder Service

All of the Wellbeing Strategy applies to all Calderdale people and seeks to maintain and improve their wellbeing. But, too often, addressing people's physical wellbeing has taken precedence over their mental wellbeing. We will seek to put that right by giving mental

wellbeing parity with physical wellbeing. This will mean moving some resources to help prevent mental ill health and to provide more and different services for people with mental ill health.

Our Enterprising and Talented Staff

The Calderdale health and care system has fantastic staff who provide efficient and effective services to many people, whether they work in the NHS, for the Council or for third sector organisations.

We will continue to support our staff deliver efficient and effective services. Sometimes this

will mean integrating services across different sectors and staff doing their jobs in different ways. We will develop an organisational development programme and training schemes that will support staff to do this and help ensure a supply of professional staff in areas where there are sometimes national shortages.

A resilient health and care system

The foundations of this Wellbeing Strategy are addressing the wider determinants of health and helping people make good choices. But services to help people when they are less well are also very important. The resources available to us as a system have reduced over the last ten years, meaning that we have to operate as efficiently as possible.

We will:

- Arrange Care Closer to Home services through an Alliance approach ensuring that the system works together towards achieving shared agreed outcomes.
- Develop digital solutions that allow the efficient sharing of information across organisations, but, just as importantly, allow service users and patients easy access to their own information, advice, support and to services.
- Some direct service provision will be delivered digitally.

- Develop an estates strategy that will allow the most efficient use of our land and buildings, including co-locating services wherever it is of benefit to patients and is more efficient.
- A Population Health approach will make sure that our system reduces health inequalities and make the most impact.
- It is our ambition through the Wellbeing Strategy to reduce the number of people who need care in hospital. When people do need care in hospital we will improve the quality of those services, including urgent care, through our Right Care, Right Time, Right Place programme.
- Details of the full range of activities being undertaken to deliver our Calderdale Cares Programme can be found on the CCG and Calderdale MBC websites. This includes a set of key enabling activities including; digitisation and workforce.



Who will do all this?

Services will be planned and delivered through Calderdale's five localities wherever possible. Only if that is not possible will they be arranged Calderdale wide or, exceptionally, at a sub-regional level, working on the principle of 'do it once' where possible.

- Our five Calderdale Cares localities will be the place where the needs of the local population and local services are planned and delivered.
- The Integrated Commissioning Executive, informed by the individual needs of our five localities, will produce and implement a

strategic commissioning strategy, focussing on delivering better outcomes for Calderdale people.

- The Health and Wellbeing Board will be the place where this strategy is overseen in public and partner organisations are held to collective account for its delivery.
- The West Yorkshire and Harrogate Health and Care Partnership will maximise opportunities for services are planned when a sub-regional approach is better for Calderdale people than more local arrangements.

Role of Primary Care Networks

Primary Care Networks (PCNs) have a critical role in delivering the Wellbeing Strategy - building on the early successes of Calderdale Cares and the evolution of the five Calderdale localities.

The Health & Well-being Board believe that the following principles will support the continued strengthening of the work we do in our localities:

- Recognising the Well-being Strategy and Inclusive Economy Strategies as the health and wellbeing system's strategic vision.
- Fostering system support for the new PCNs, building on the approach set out in Calderdale Cares, and ensuring their success as a key part of our system architecture.
- Recognising the mutual dependency between PCNs and the broadest range of local partners and communities in improving the lives of local people.
- Ensuring we build on the specific expertise and skills which already exist within the broad range of organisations and communities across the health and wellbeing system.





CALDERDALE
CARES

VISION 2024

#VISIONCDALE2024